



# FX-PT-M-2HP OWNER'S MANUAL



## FX-PT-M-2HP PORTABLE FUME EXTRACTOR OWNER'S MANUAL



# FX-PT-M-2HP OWNER'S MANUAL

## TABLE OF CONTENTS

### GENERAL PRODUCT INFORMATION

Product Overview  
Unit Specifications

### OPERATION AND USE

Warnings  
Electrical Requirements  
Operation

### MAINTENANCE

Filter Information  
Changing the Filters  
HEPA Filter Installation  
Exploded View & Parts List  
Machine Dimensions

### APPENDIX

Warranty



# FX-PT-M-2HP OWNER'S MANUAL

## GENERAL PRODUCT INFORMATION

### PRODUCT OVERVIEW

The FX-PT-M-2HP Medium Duty Fume Extractor is intended to capture welding smoke, dust and fumes. This unit is not designed for chemical fumes, corrosive fumes and gases, or any application producing combustible dusts.

### UNIT SPECIFICATIONS

Motor	2 HP
Input Power	115V
Airflow	1200 CFM
Unit Dimensions Packing	35.5" x 32.7" x 45.9"
Dimensions Unit Weight	36.0" x 34.1" x 51.4"
Packing Weight	302.03 lbs.
Arm Connection	390.22 lbs.
Noise Level	Ø6" or Ø8"
HEPA Filter Specifications	70.75 dBA
	99.97%



# FX-PT-M-2HP OWNER'S MANUAL

## OPERATION AND USE

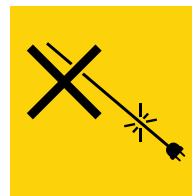
### WARNINGS

Read this manual carefully before operating the product to ensure safety and proper use. This owner's manual should be saved for future reference.

1. Adhere to all local electrical and safety regulations while operating the product.
2. All electrical wire connections and installation should be carried out by a professional technician.
3. DO NOT operate the product near flammable or explosive materials.
4. DO NOT use this product to collect iron chips and dust simultaneously as this can produce sparks and therefore a fire/explosion.
5. Shut down the unit, isolate machine from energy source, apply lockout/tagout devices if applicable, check for stored energy before disconnecting power and during maintenance.
6. DO NOT kink the power cord. Keep it away from oils, chemicals, and other flammable materials.
7. Ensure the supplied input power is compliant with the recommended input power.
8. DO NOT reach hands near the fan blades at any point while power is connected.
9. DO NOT place foreign objects near the inlet to avoid damaging the fan blades.
10. When not in use, cover air inlets to protect the equipment.



**DO NOT INSTALL SUCH THAT  
POWER CORD BECOMES A  
TRIP/FALL HAZARD**



**DO NOT OVER-EXTEND OR  
STRETCH THE POWER CORD.**



**USE CAUTION  
AT ALL TIMES  
WHEN  
OPERATING**



**BEWARE OF  
ELECTROCUTION  
HAZARDS**



**AVOID ALL  
FLAMMABLE  
AND EXPLOSIVE  
MATERIALS**



**DO NOT EXPOSE  
CORD TO RAIN  
OR WATER**



**DO NOT TOUCH  
FAN BLADES**



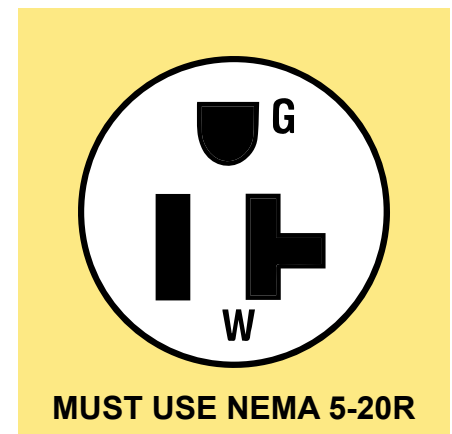
# FX-PT-M-2HP OWNER'S MANUAL

## OPERATION AND USE

### ELECTRICAL REQUIREMENTS

This portable fume extractor is equipped with a standard NEMA 5-20P plug and **SHOULD ONLY BE PLUGGED INTO A NEMA 5-20R RECEPTACLE ON A 20 AMP BREAKER.**

Do not attempt to modify the electrical components of this unit. Modifying the electrical components will immediately void any warranty, guarantee of performance or return policy. Improper electrical installation or modification could result in damage to the unit, damage to the electrical circuit, an electrical fire or severe personal injury.

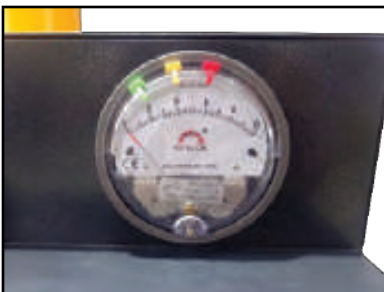


### OPERATION



#### Magnetic Switch

1. Ensure the unit is plugged into a proper power source.
2. Press the green button on the control box to turn the unit on.
3. Press the red button on the control box to turn the unit off.



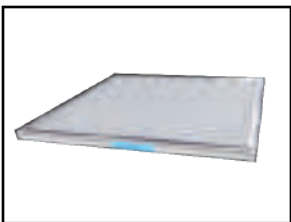
#### Pressure Gauge

- During normal operation, the pressure gauge indicator should read between 2" ~ 4"
- If the pressure gauge indicator exceeds 4" ~ 6" this could indicate that the filters are dirty and need to be cleaned or replaced.

## MAINTENANCE

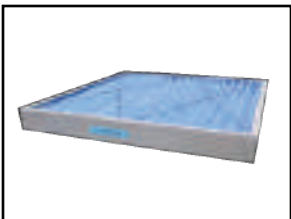
### FILTERS

Your portable fume extractor operates by drawing contaminated air in through the hood and through the filters before exhausting clean air out and into your space. Routine filter changes and maintenance will optimize your unit's performance and extend the lifetime of your equipment.



#### **Aluminum Mesh - Captures sparks and steel chips**

- Routinely inspect for large chips, debris or damage to the mesh.
- Washable and reusable, must dry completely before reinstalling.
- Replace when damaged or when cleaning is no longer effective.



#### **Pleated Pre-Filter - Captures 35% of the 3-10 micron fine particles**

- Routinely inspect for damage.
- To clean, vacuum or use soft bristle brush to release particulate.
- Replace when cleaning is no longer effective and does not improve airflow.



#### **V-Cell Filter - Captures fine particulate**

- Do not wash or vacuum the V-Cell filter.
- Routinely inspect the gasket at the top of the V-Cell filter and replace if damaged. Replace when cleaning/replacing the mesh and pleated pre-filters no longer improves airflow.



#### **(Optional) HEPA Filter - Captures 99.99% of 0.3 micron particulate**

- Do not wash or vacuum the HEPA filter.
- Routinely inspect for damage and debris.
- If replacing the aluminum mesh, pleated pre-filter and V-Cell filter does not improve airflow, replace the HEPA filter.



#### **(Optional) Carbon Filter - Mitigates Odors**

- Do not wash or vacuum the Carbon filter.
- Routinely inspect for large chips, debris or damage to the filter media.
- Replace when damaged or when odor mitigation is no longer effective.

## MAINTENANCE

### CHANGING THE FILTERS

1. Open the filter maintenance door and loosen the retaining knob.



2. Slide the filter retaining bar over to release the retention handles. Rotate downward to release.



*Retention handles will release both the V-Cell and pleated pre-filter.*



# FX-PT-M-2HP OWNER'S MANUAL

## MAINTENANCE

### CHANGING THE FILTERS

5. To remove the V-Cell filter & pleated pre-filter, gently lift from the bottom and slide out.



6. To remove the aluminum mesh filter, gently push the bottom backward and lower out of the frame.





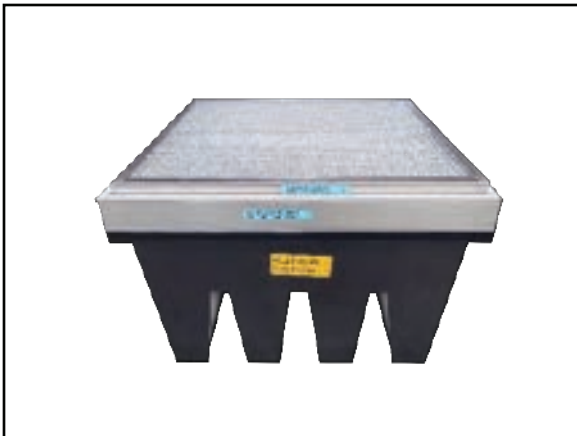
## MAINTENANCE

### CHANGING THE FILTERS

7. Vacuum the machine and remove any large chips and debris. Inspect gasketing for damage.



8. Inspect filters. Clean or replace as advised in the *Filters* section of this Guide.





# FX-PT-M-2HP OWNER'S MANUAL

## MAINTENANCE

### CHANGING THE FILTERS

9. To replace the aluminum mesh filter, gently lift and slide to place back into position.



10. To replace the pleated pre-filter and V-Cell filter, gently slide into track and push back into position.





# FX-PT-M-2HP OWNER'S MANUAL

## MAINTENANCE

### CHANGING THE FILTERS

11. Secure all filters into place using the retention handles and twist the knob on the retention



12. Close the maintenance door and secure the latches.





# FX-PT-M-2HP OWNER'S MANUAL

## MAINTENANCE

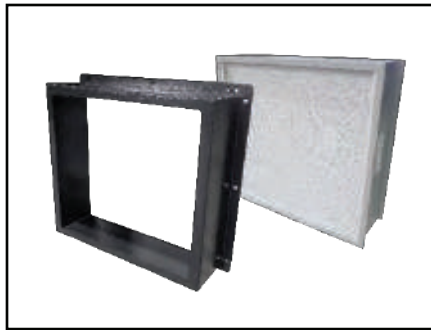
### HEPA FILTER INSTALLATION

The HEPA filter and frame assembly is an optional addition and can be installed at anytime. Carefully review and follow the instructions below in install the filter and frame.



#### STEP 1

Locate the exhaust grill on the side of the unit. Remove and retain the (12) surrounding screws.



#### STEP 2

Place the HEPA frame over the HEPA filter. Ensure the airflow arrow on the filter is points in the correct direction.



#### STEP 3

Using the (12) screws, secure the HEPA frame to the unit and over the filter as shown.

### PURCHASING REPLACEMENT FILTERS

To purchase replacement filters, call us at **866-651-9762** or email us at [info@fumextractors.com](mailto:info@fumextractors.com)

#### Filter

V-Cell Filter

Pleated Pre-Filter

Aluminum Mesh Pre-Filter

Carbon Filter (Optional)

HEPA Filter (Optional)

HEPA Frame (Optional)

#### Part Number

FXF-PTM-VCCELL

FXF-PTM-PF

FXF-PTM-ALPF

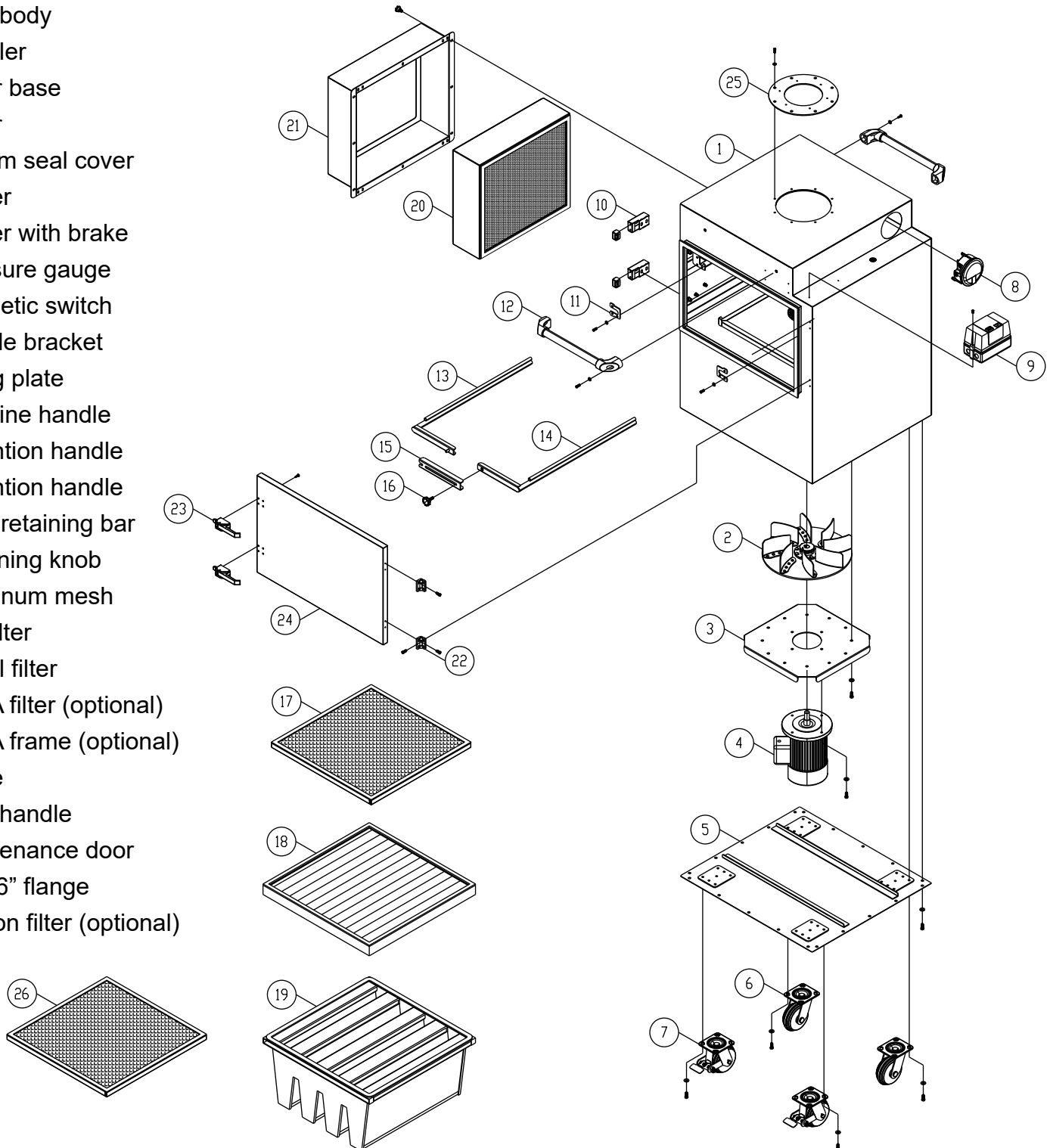
FXF-PTM-CF

FXF-PTDDT-HEPA

FXF-PTDDT-HFRAME

## EXPLODED VIEW AND PARTS LIST

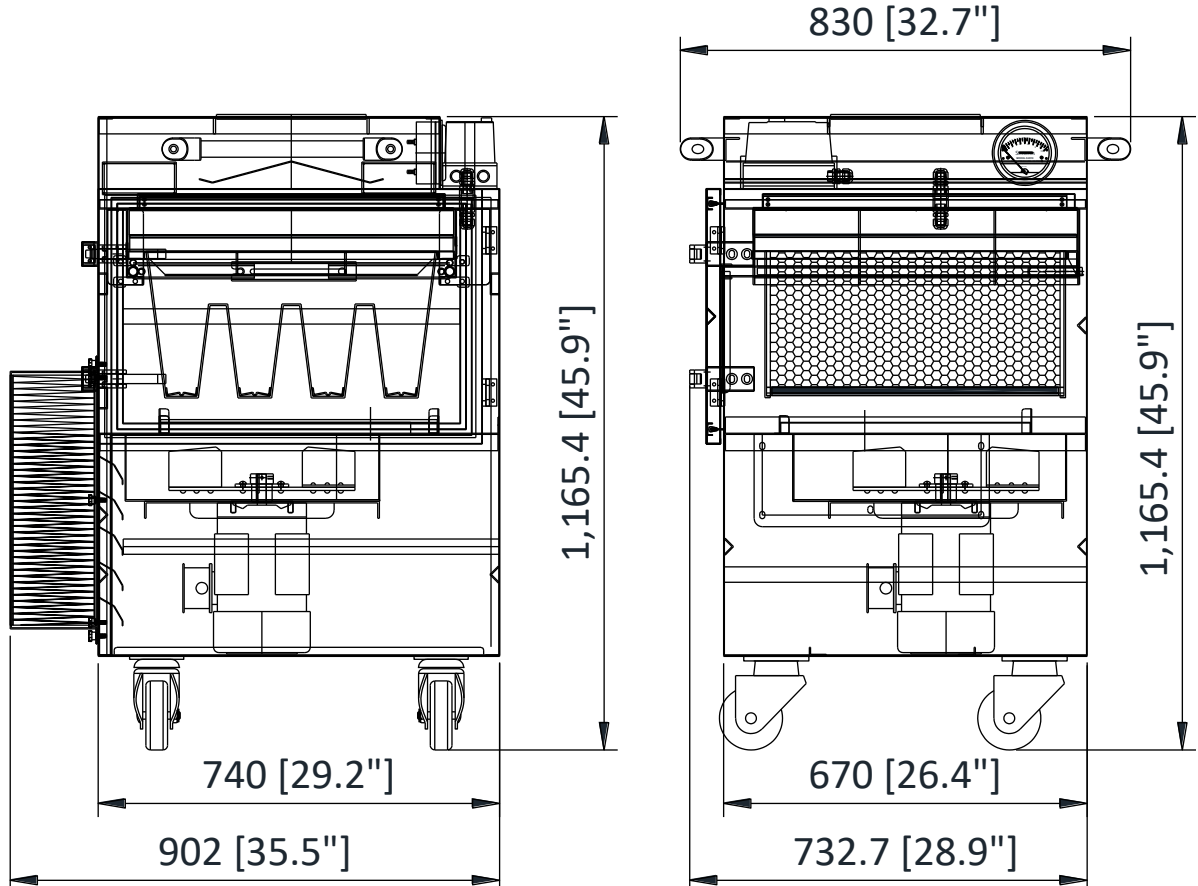
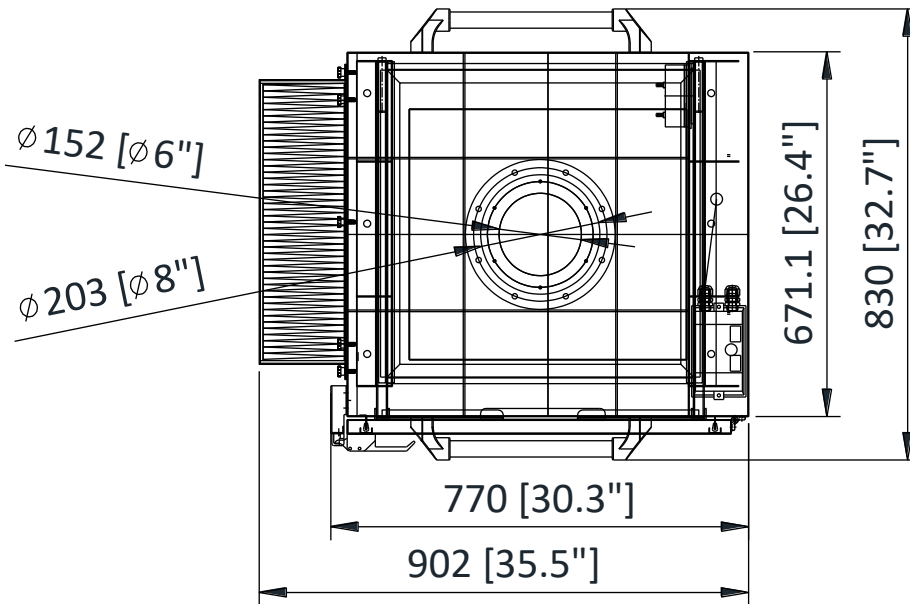
1. Main body
2. Impeller
3. Motor base
4. Motor
5. Bottom seal cover
6. Caster
7. Caster with brake
8. Pressure gauge
9. Magnetic switch
10. Handle bracket
11. Fixing plate
12. Machine handle
13. Retention handle
14. Retention handle
15. Filter retaining bar
16. Retaining knob
17. Aluminum mesh
18. Pre-filter
19. V-Cell filter
20. HEPA filter (optional)
21. HEPA frame (optional)
22. Hinge
23. Door handle
24. Maintenance door
25. 8" to 6" flange
26. Carbon filter (optional)





# FX-PT-M-2HP OWNER'S MANUAL

## MACHINE DIMENSIONS





# FX-PT-M-2HP OWNER'S MANUAL

## WARRANTY

### Limited Warranty



FumeXtractors' warranty is for the authorized distributors and ultimate purchasers (end users) of its products. FumeXtractors warrants its products for two years from ship date and covers defects in both material and workmanship. Labor and freight are not covered under the warranty policy.

Any claims made pursuant to this warranty by the customer or distributor are conditional upon FumeXtractors' inspection of the product upon which the claim is made.

Products claimed under this warranty shall be shipped directly to FumeXtractors, at Fumextractors' expense, unless otherwise stated. Approval must be issued for the warranty claim before such a shipment will be accepted. Should the claim be approved, FumeXtractors is happy to offer one of the following remedies: either a replacement of defective product, or a credit issue/repayment.

This warranty is void on all FumeXtractors products if any product has been misused, mistreated, or used other than for its specified application.

[fumextractors.com](http://fumextractors.com)

(866) 651-9762



1-866-651-9762  
INFO@FUMEXTRACTORS.COM  
11088 GRAVOIS INDUSTRIAL CT.  
SAINT LOUIS, MO 63128