



## 2020 PRODUCT CATALOG



FumeXtractors was developed by Air Cleaning Specialists, Inc., to combat the health hazards that industrial metalworkers are faced with on a daily basis.

We offer a dynamic selection of fume and dust extraction systems to remove contaminants in facilities where welding, laser cutting, grinding, or deburring takes place, and in environments where ambient dusts are present.

FumeXtractors is backed by over 40 years of air filtration experience and our team is dedicated to improving air quality and machine operator safety throughout industrial facilities.

Your safety is important to us.



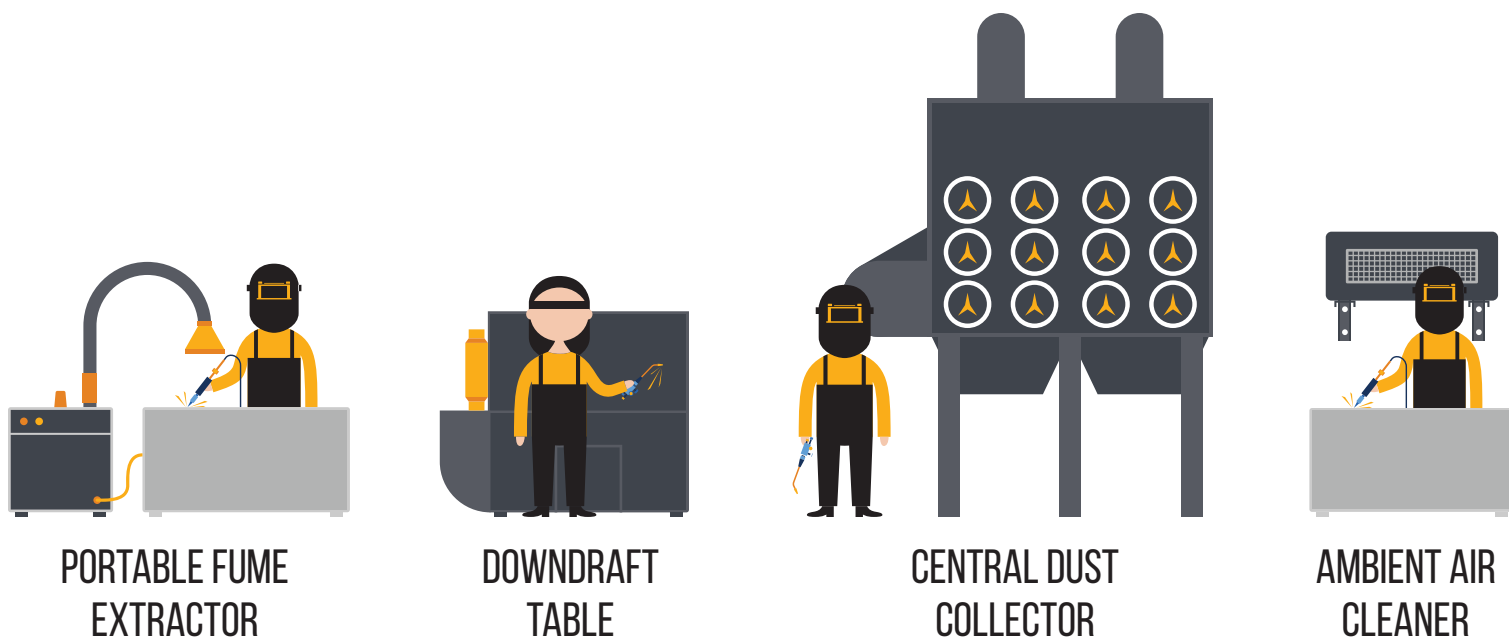
HEADQUARTERED IN ST. LOUIS, MO  
866-651-9762  
INFO@FUMEXTRACTORS.COM

# TABLE OF CONTENTS

---

Product	Page
Weld Fume Collection Methods	1
Portable Fume Extractors	2
Fume Guns	3
Fume Extractor Arms	4
Wall Mounted Fume Extractors	6
Dry Downdraft & Backdraft Tables	8
Wet Downdraft Tables	10
Grinding Stations	11
Welding Booths	12
Robotic Welding Stations	14

# WELD FUME COLLECTION METHODS



## BENEFITS COMPARISON

	PORTABLE FUME EXTRACTORS	DOWNDRAFT TABLES	CENTRAL DUST COLLECTORS	AMBIENT AIR CLEANERS
BEST USED FOR	Large/mobile workpieces, smaller shops, environments where ducting is impractical	Environments with hazardous materials, where pieces cover less than the surface size of the table	Manufacturing, production, full scale industrial applications	Improving overall air quality & general hygiene; environments where source capture is impractical.
SOURCE CAPTURE	★ ★ ★	★ ★ ★ ★ ★	★ ★ ★ ★ ★	★
FILTER LIFE	★ ★	★ ★ ★ ★	★ ★ ★ ★ ★	★ ★
PRICE RANGE	\$	\$ \$	\$ \$ \$	\$



IN-STOCK

# PORTABLE FUME EXTRACTORS

FX-PT-0807-P



## BENEFITS

- Aluminum Mesh Pre-Filter
- Pleated Cartridge Filter
- Manual Pulse Jet Filter Cleaning
- Flexible, Durable, Source Capture Arm
- UL-Approved Push Button Control Box
- Fully Enclosed Motor
- Dust Cleanout Tray
- Magnehelic Pressure Gauge

## OPTIONS

- HEPA Afterfilter
- Light Kit
- Large Diameter Fume Hood
- 3-Phase Motor
- Oversized Casters

## DETAILS

**Airflow:** 1100 CFM

**Motor:** 1.5 HP

**Input Power:** 120V/1PH/60Hz

**Compressed Air Req:** 90 PSI

**Noise Level:** 77dB(A) @ 5ft.

## IN-STOCK PORTABLES

Arm Dia.	Arm Length	Pulse Cleaning	Part Number
6"	7' & 10'	Yes	FX-PT-06XX-P
8"	7' & 10'	Yes	FX-PT-08XX-P



# FUME VACCUMS



IN-STOCK

## DETAILS

**Airflow:** 80 CFM

**Vacuum:** 80 W.G.

**Voltage:** 120V/1PH or 240V/1PH

**Dimensions:** 24" x 18" x 39"

**Net Weight:** 138 lbs.

**Inlet Size:** 2" (O.D.)



Shown with Abicor Binzel Fume Gun



## BENEFITS

- Cleaning Wand for 6x - 7x Filter Life
- Shunt for Automatic On/Off
- Filter Condition Indicator
- Metal Mesh Spark Trap Pre-Filter
- Nanofiber Fire Retardant Filters
- Dust Cleanout Tray
- Compatible with Abicor Binzel Fume Gun

## IN-STOCK VACUUMS

Voltage	Part Number
120V	FX-VAC-120V
240V	FX-VAC-240V





# FUME EXTRACTOR ARMS



FX-HA-0807

## HANGING FUME ARMS

Our most popular style of fume arm, mount to a wall or ceiling for fume extraction that requires zero floorspace.



**IN-STOCK**



FX-SA-0807

## STANDING FUME ARMS

Suitable for benchtop applications.



**IN-STOCK**



FX-TA-0606

## TELESCOPING FUME ARMS

Perfect for space-constrained environments, these arms are also commonly paired with Welding Booths.

# BENEFITS & OPTIONS

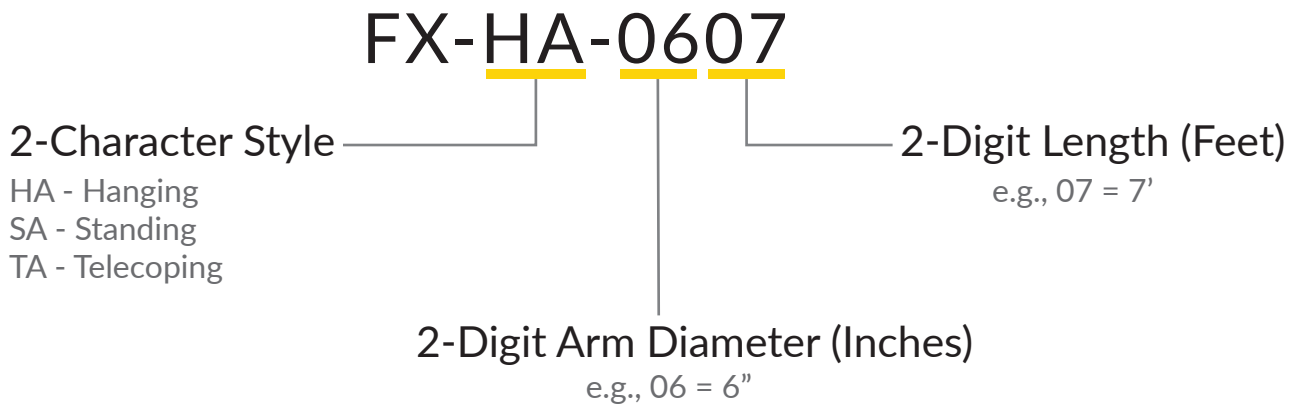
## BENEFITS

- Designed for Source Capture
- 360° Movement
- Easy to Maneuver
- External Joints for Easy Maintenance
- Friction Plates for Stay-Put
- Solid Metal Construction

## OPTIONS

- Standard Light Kit
- LED Light Kit
- High Temp Hose

## PART NUMBER DETAILS



## IN-STOCK ARMS

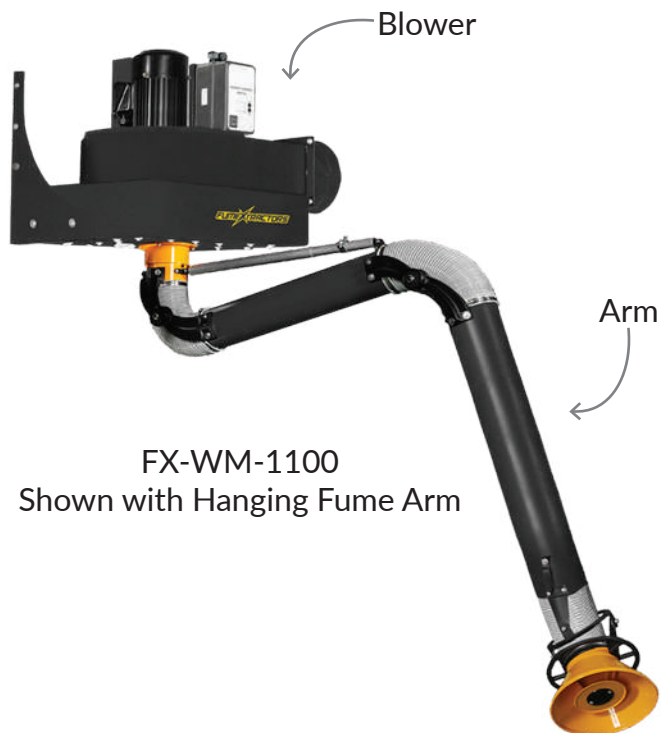
Type	Arm Dia.	Length	Hood Dia.	Part Number
Hanging	6" & 8"	7', 10', 14'	14"	FX-HA-XXXX
Standing	6" & 8"	7', 10', 14'	14"	FX-SA-XXXX

\*All arms also available in stainless steel





# WALL MOUNTED FUME EXTRACTORS



FX-WM-1100  
Shown with Hanging Fume Arm

## DUCTED UNITS

Duct to an existing dust collection system, or simply exhaust outside.



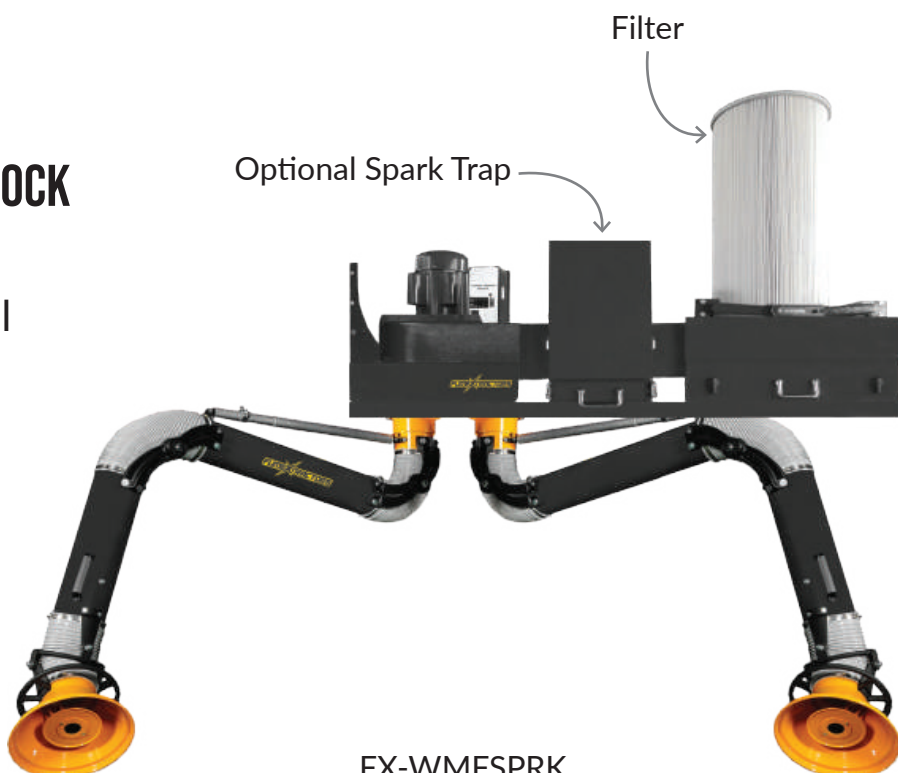
IN-STOCK

## FILTERED UNITS



IN-STOCK

Completely self contained fume extraction. No need for a central dust collection system or ductwork. Extremely popular in educational environments, paired with Welding Booths.



FX-WMFSPRK  
Shown with Dual Hanging Fume Arms

# BENEFITS & OPTIONS

## BENEFITS

- Zero Floorspace Needed
- Minimal Installation\*
- Designed for Source Capture
- Solid Steel Construction
- 2X the Suction Distance of Competitor's
- UL-Approved Push Button Control Box

## OPTIONS

- Spark Trap
- Standard Light Kit
- LED Light Kit
- High Temp Hose
- Remote Start

## IN-STOCK WALL MOUNTED UNITS

### Wall Mounted Fume Extractors, No Fume Arm

Style	Part Number
Blower	FX-WM-1100
Blower + Filter	FX-WMF
Blower + Filter + Spark Trap	FX-WMFSPRK

### Wall Mounted Fume Extractors + Fume Arm

Filtered	Spark Trap	Arm Dia.	Arm Length	Part Number
No	No	6" & 8"	7', 10', 14'	FX-WM-XXXX
Yes	No	6" & 8"	7', 10', 14'	FX-WM-XXXX-FLTR
Yes	Yes	6" & 8"	7', 10', 14'	FX-WM-XXXX-FLTR-SP

\*Wall Mounted Fume Extractors and arms also available in stainless steel



# DRY DOWNDRAFT TABLES



IN-STOCK

## DETAILS

**Airflow:** 2600 CFM

**Face Velocity:** 350 FPM

**Motor:** 3.0 HP

**Input Power:** 230V/3PH/60Hz

**F.L.A.:** 9.6 Amps

**Compressed Air Req:** 90 PSI

**Pre-Filter:** Metal Mesh

**Prime Filter:** Nanofiber

**Noise Level:** 77dB(A) @ 5ft.



## BENEFITS

- Safest Collection Method
- OSHA Compliant
- High Capture Velocity
- Plug-And-Play Design
- Fire Retardant Cartridge Filter
- Built-In Spark Arrestor
- Automatic, Offline Filter Pulse Cleaning



# BENEFITS & OPTIONS

## OPTIONS

- Backdraft Airflow
- Windowed Side Panels
- HEPA Afterfilter



## PART NUMBER DETAILS

**FX-DDT-3648**

Table Style

DDT - Dry Downdraft  
BDT - Backdraft

2-Digit Table Width (Inches)

e.g., 48 = 48"

2-Digit Table Length (Inches)

e.g., 36 = 36"

## IN-STOCK TABLES

Type	Surface Size	Part Number
Dry Downdraft	36" X 48"	FX-DDT-3648

\*Select downdraft/backdraft tables also available in stainless steel



# WET DOWNDRAFT TABLES



## NFPA 64 & 484 COMPLIANT

Designed for Explosive Dusts such  
as Aluminum, Magnesium, Titanium  
& Stainless Steel

## DETAILS

**Airflow:** 3000 CFM

**Face Velocity:** 278 FPM

**Motor:** 5.0 HP

**Input Power:** 460V/3PH/60Hz

**F.L.A.:** 7.6 Amps

**Noise Level:** 72 DB @ 5ft.

**Water Inlet:** 0.75"

**Water Outlet:** 1"

**Construction:** 14 Ga. Steel

**Gross Weight:** 1891 lbs.

**Net Weight:** 1696 lbs.

# BENCH GRINDING STATIONS

## DETAILS

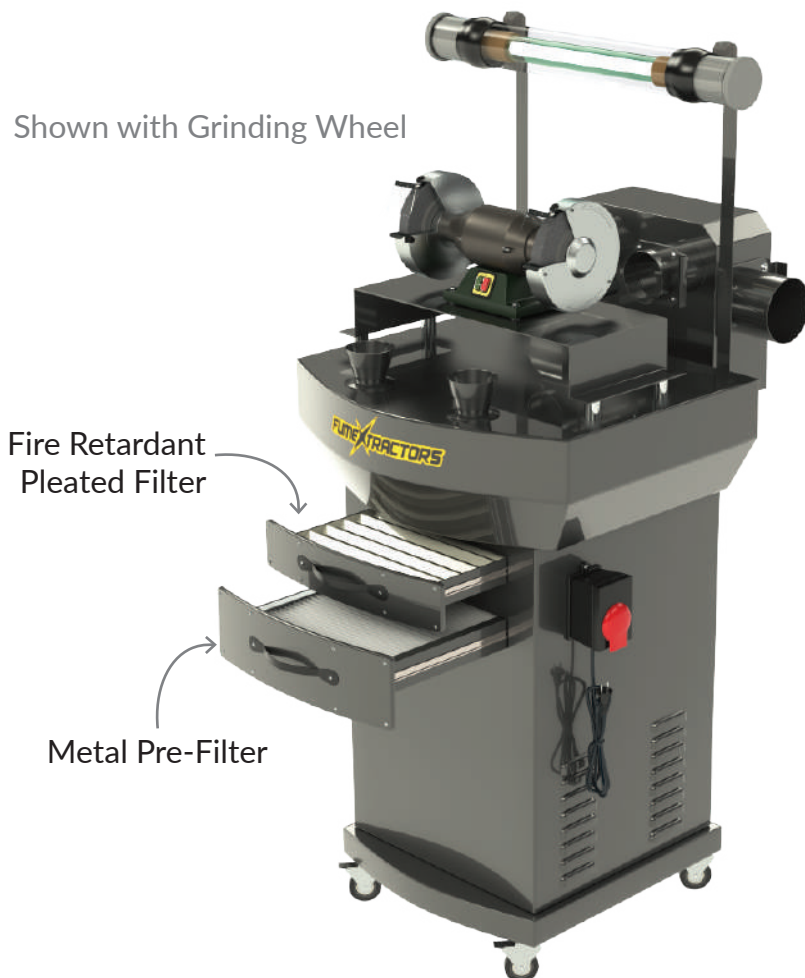
**Airflow:** 1100 CFM

**Motor:** 1.5 HP

**Inlets:** (2) 4" and (2) 2.5"

**Dimensions:** 22" x 27" x 40"

**Net Weight:** 121 lbs.



## BENEFITS

- Universal Grinding Wheel Mount
- Magnetic On/Off Switch
- Light Kit
- Metal Mesh Spark Trap Pre-Filter
- Fire Retardant Pleated Pre-Filter
- Dust Cleanout Tray
- Industrial Casters
- Blast Gated Inlets

## AVAILABLE OPTIONS

CFM	Part Number
1000	FX-GS-1000





# WELDING BOOTHS



**MADE FOR EDUCATION**



5'x5' 12ga. powder coated steel welding booth with rear shelf

## BENEFITS

- Sturdy 3-Panel Construction
- Durable 12ga. or 16ga. Powder Coated Steel
- Modular Design
- Easy Assembly
- Designed for AWS Requirements
- Meets NFPA Standards
- ADA Compliant (When sized accordingly)

## OPTIONS

- CO<sub>2</sub> Brackets
- Curtains (Stripped or Standard)
- Custom Sized Booths
- C-Clamps
- J-Hooks
- Lazy Susans
- Light Kits
- Rear Shelves & Welding Tables
- Top Mounted Fume Extraction Units



5'x5' 16ga. powder coated steel welding booth with rear shelf, standard curtain, CO2 bracket, c-clamp, lazy susan, light kit, top-mounted fume extraction system with 6" dia. fume arm





# ROBOTIC WELDING STATIONS



Shown with welder & enclosure

## DETAILS

**Airflow:** 2340-3000 CFM

**Motor:** 5-10 H.P.

**Voltage:** 230V/3PH/60Hz

**Compressed Air Req:** 90 PSI

**Compressed Air Resvr:** 3.2-8 gal.

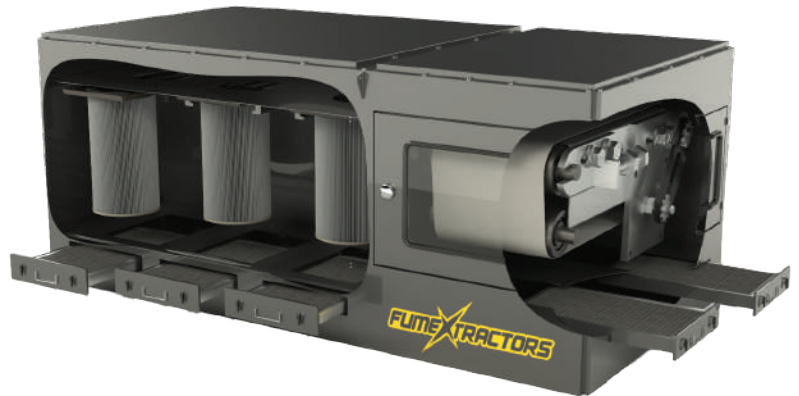
**Inlet Size:** 15.7" x 14"  
17.7" x 21.7"

## AVAILABLE OPTIONS

Motor H.P.	Part Number
5	FX-RWS-5HP
10	FX-RWS-10HP

## BENEFITS

- Aluminum Mesh Pre-Filters
- Self-Changing Paper Roll Media
- Teflon Coated Cartridge Filters
- HEPA Module (optional)
- Jet Pulse Filter Cleaning
- Dust Cleanout Trays
- TEFC Motor
- Adjustable Blast Gates





---

**11088 GRAVOIS INDUSTRIAL CT. SAINT LOUIS, MO 63128**  
**FUMEXTRACTORS.COM | 866-651-9762**

**FUMEXTRACTORS IS A PROUD PRODUCT OF AIR CLEANING SPECIALISTS, INC.**